

Neill Land Company- April 2011 – Land for Sale
Call : James (Jim) A. Neill Jr. at 662-417-5295

Tallahatchie County, MS

490 acres tract - \$1550.00 per acre

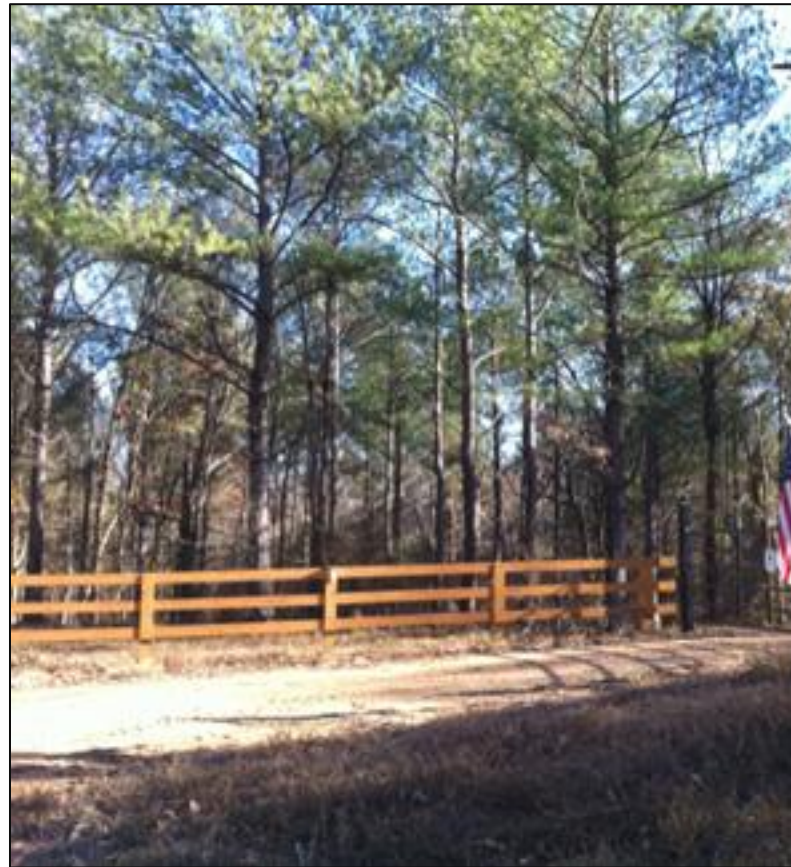
- 151 ac CRP pines 25 yrs old \$6100.00 per yr. payment
- 230 ac mixed hardwoods
- 100 ac 6 yr. old pines and fields
- 6 ponds, old barn
- all utilities
- 1 mile frontage road
- Excellent deer and turkey hunting, fishing
- 1 mile from Hwy 35 between Charleston and Batesville, MS





Tallahatchie County, MS
490 acres tract

151 ac CRP pines 25 yrs old
(\$6100.00 per yr. payment)
230 ac mixed hardwoods
100 ac 6 yr. old pines and fields
6 ponds, old barn all utilities
1 mile frontage road
Excellent deer and turkey hunting, fishing
1 mile from Hwy 35 between Charleston
and Batesville, MS





Map of Land Area

Tallahatchie County, MS

490 acres tract - \$1550.00 per acre

151 ac CRP pines 25 yrs old

(\$6100.00 per yr. payment)

230 ac mixed hardwoods

100 ac 6 yr. old pines and fields

6 ponds, old barn all utilities

1 mile frontage road

Excellent deer and turkey hunting, fishing

1 mile from Hwy 35 between Charleston and Batesville, MS

Call : James (Jim) A. Neill Jr. at 662-417-5295