

Neill Land Company- April 2011 – Land for Sale  
Call : James (Jim) A. Neill Jr. at 662-237 - 4147

Tallahatchie County, MS  
490 acres tract

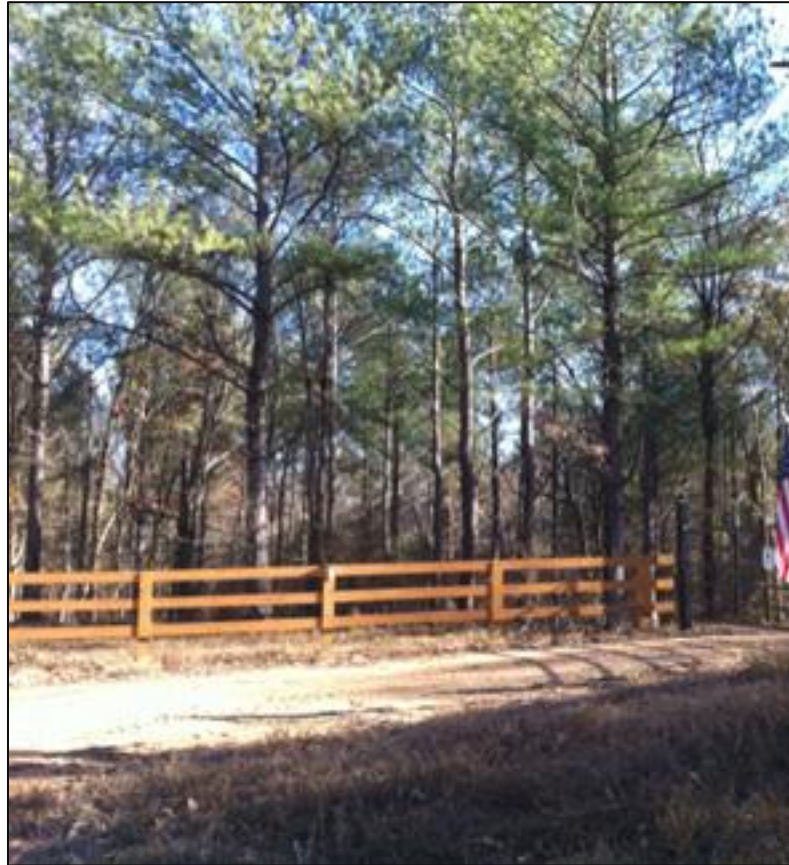
- 151 ac CRP pines 23 yrs old \$6100.00 per yr. payment
- 230 ac mixed hardwoods
- 100 ac 6 yr. old pines and fields
- 6 ponds, old barn
- all utilities
- 1 mile frontage road
- Excellent deer and turkey hunting, fishing
- 1 mile from Hwy 35 between Charleston and Batesville, MS





Tallahatchie County, MS  
490 acres tract

151 ac CRP pines 23 yrs old  
(\$6100.00 per yr. payment)  
230 ac mixed hardwoods  
100 ac 6 yr. old pines and fields  
6 ponds, old barn all utilities  
1 mile frontage road  
Excellent deer and turkey hunting, fishing  
1 mile from Hwy 35 between Charleston  
and Batesville, MS





**Map of Land Area**

**Tallahatchie County, MS**

**490 acres tract**

151 ac CRP pines 23 yrs old

(\$6100.00 per yr. payment)

230 ac mixed hardwoods

100 ac 6 yr. old pines and fields

6 ponds, old barn all utilities

1 mile frontage road

Excellent deer and turkey hunting, fishing

1 mile from Hwy 35 between Charleston and Batesville, MS

**Call : James (Jim) A. Neill Jr. at 662-237 - 4147**